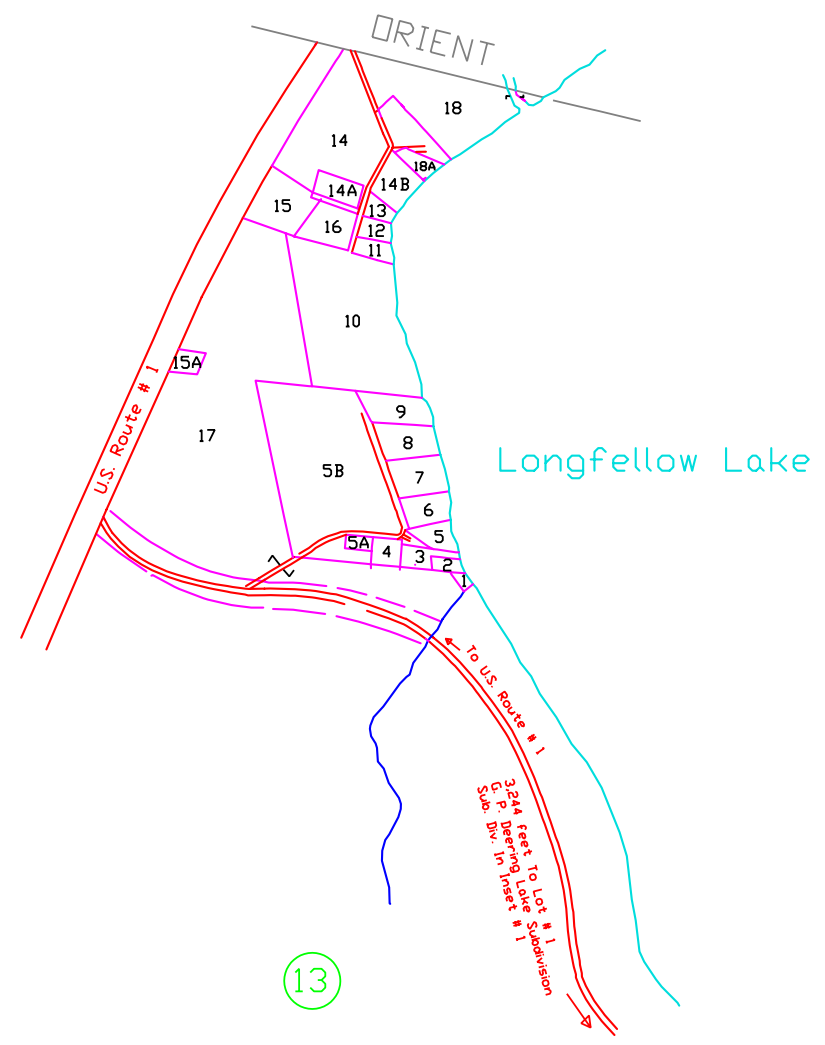
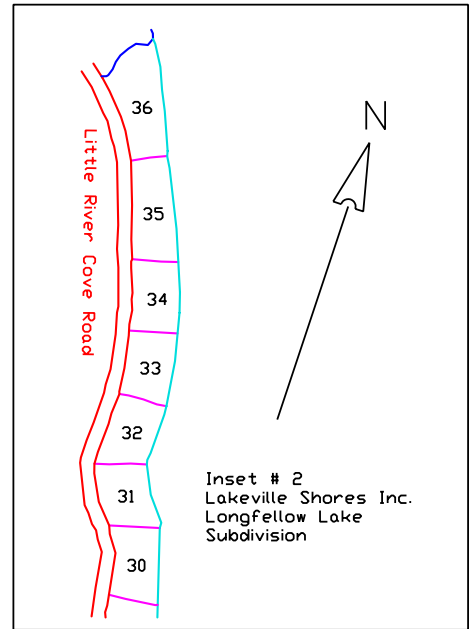


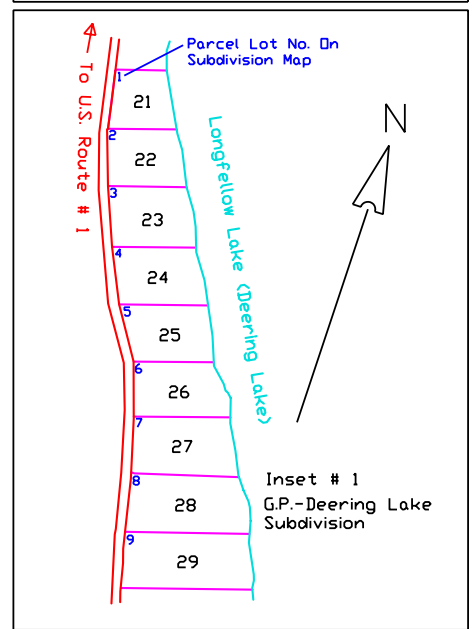
13



13

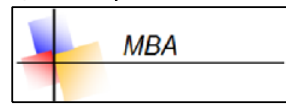


Inset # 2  
Lakeville Shores Inc.  
Longfellow Lake  
Subdivision



Inset # 1  
G.P.-Deering Lake  
Subdivision

Map modifications &  
Updates by . . .



0 400' 800' 1200'

Map Scale - For  
Assessment Purposes  
Not To Be Used For  
Conveyances

Legend	
	Parcel Boundaries
	Parcel Lot No.
	Adjacent Map No.
	Road
	Parcel Lot No. - Subdivision Map
	Lake
	Stream
	Marsh

MAP No. 19

Property Map  
Town Of Weston  
Aroostook County, Maine  
Original Map Prepared By  
James W. Sewall Company  
Old Town, Maine